



# WINE & LIQUOR

COLLECTION

**Cayuga** DISPLAYS



**DEPARTMENT:**

# WINE & LIQUOR

**Let us help create a liquor and wine shop that your customers choose as their regular supply source.**

This department commonly has to succeed in presenting a maximum of product with a minimum of space. We offer a wide range of customizable shelving and mobile units, refrigerated cases and cross-merchandising options (like with cheese, for example). We can help develop the department that will get your products noticed. And with our layout expertise, you'll be sure to have a shop that truly feels worth the trip.

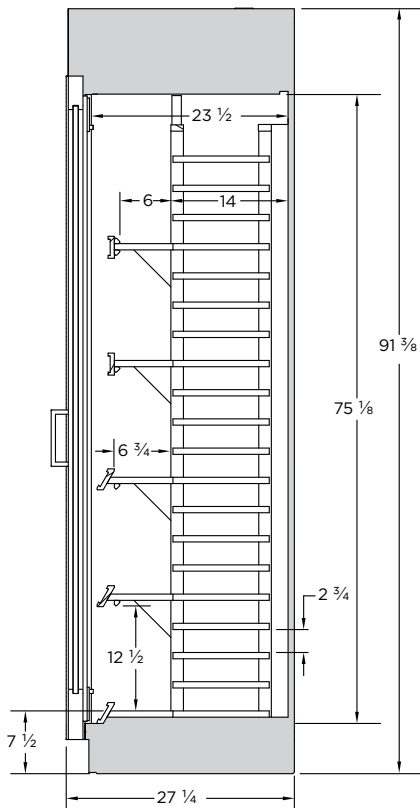
And when you work with Cayuga Displays, you can always be confident we'll help you to select the right product and options, so that you have the food presentation that is certain to elevate your customers' experience and enhance your brand - beautifully.

*"Working with the Cayuga team was 100% positive."*

Peter Cavin,  
Country Grocer,  
Vancouver Island, BC

# REFRIGERATED VINTAGE WINE DISPLAY

 REFRIGERATED



Remote Refrigeration Shown

MODEL	LENGTH
WC02S-48	48"

## FEATURES:

- Self-contained top mounted Refrigeration hidden behind a wooden fascia panel
- Exterior wood veneer construction or laminate finish options. Many stain finishes or laminate colors available
- Lockable framed wood doors with tempered thermal pane glass inserts
- Remote refrigeration option available
- 5 levels of front fixed wood display shelves with an integrated solid wood price tag mold. 9 standard wine bottles per shelf - stand up
- Wooden wine rack behind the display shelves designed to hold 170 standard sized wine bottles in lay down position
- LED lighting located under the top ledge and under each shelf
- Designed to maintain product temperature of 54-56°F

## SUGGESTED APPLICATIONS:



Wine & Liquor

Note: Information and specifications may change due to engineering improvements.



# REFRIGERATED VINTAGE WINE DISPLAY

 REFRIGERATED

## ELECTRICAL SPECS

MODEL	LENGTH	VOLTS	AMPS	NEMA
WC02S-48	48"	115	11.5	5-15P

## EXTERIOR FINISHES

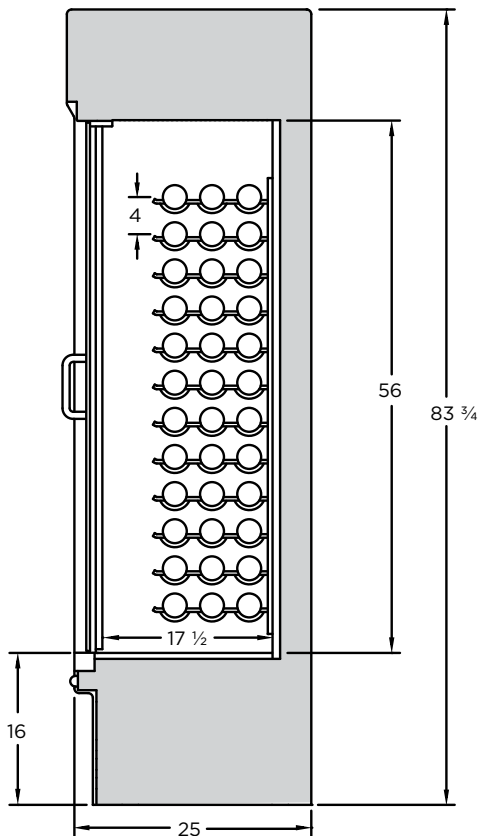
Category "A" laminate finish: <b>A-</b> ____	
Category "B" laminate finish: <b>B-</b> ____	
Other custom laminate specs:	
Oak Veneer Plywood	
- Vertical grain direction	
- Horizontal grain direction	
Birch/Maple Veneer Plywood	
- Vertical grain direction	
- Horizontal grain direction	
Clear Finish applied to veneer	
Stain Finish Choice _____	
Miscellaneous Option	
Remote Refrigeration	

## ADDITIONAL FEATURES:

- Designed to maintain product temperature of 55°F with a maximum ambient atmosphere of 75°F/55% humidity
- 2 Year Parts & Labour Warranty

# REFRIGERATED WINE DISPLAY

 REFRIGERATED




MODEL	LENGTH
WC01S-48	49 7/8"

## FEATURES:

- 3 interior finishes available
- Tempered glass swing doors. Locking option available
- Many laminate exterior colors, patterns and wood grain finishes available. Powdercoated finishes also available
- R-134A self-contained refrigeration. Remote option also available
- Fixed bottle slots designed to hold 108 standard sized wine bottles. 12 rows x 3 bottles deep
- LED lighting located on each side of the display
- Designed to maintain product temperature of 54-56°F

## SUGGESTED APPLICATIONS:

 Wine & Liquor

Note: Information and specifications may change due to engineering improvements.



# REFRIGERATED WINE DISPLAY

 REFRIGERATED

ELECTRICAL SPECS				
MODEL	LENGTH	VOLTS	AMPS	NEMA
WC01S-48	49 7/8"	115	11.5	5-15P

INTERIOR FINISH	
Textured Black	
Textured White	
Brushed Stainless Steel	

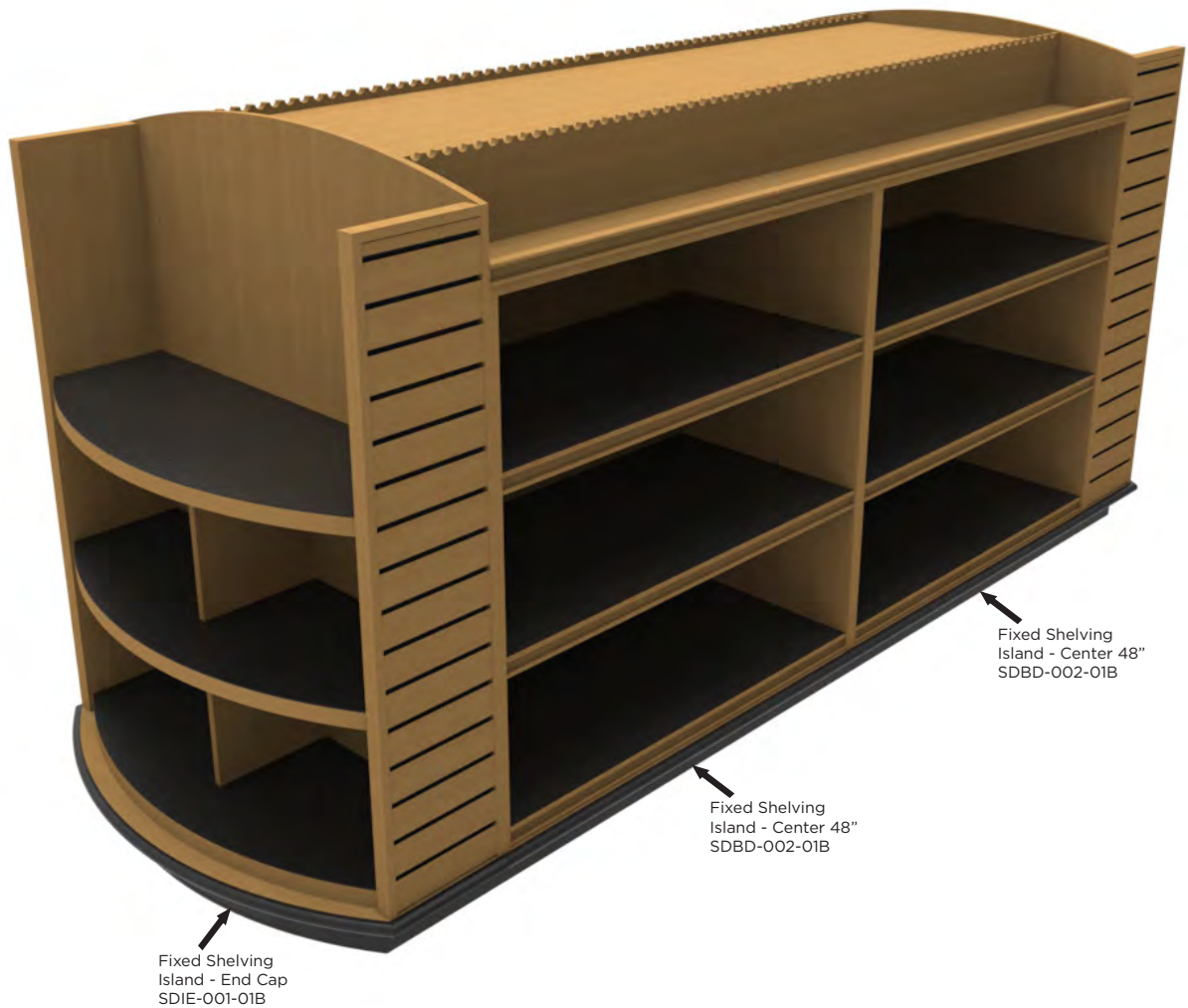
END PANELS	
Interior laminate the same as exterior	
Black interior	
White interior	
Brushed Stainless Steel interior	
Mirrored interior	
Mirrored end panel glass	
Tempered Glass Panes installed into both end panels	
Tempered Glass Pane installed in the LH end panel (visualized from the front)	
Tempered Glass Pane installed in the RH end panel (visualized from the front)	
- Black T-mold edging	
- White T-mold edging	
- Stainless Steel T-mold edging	
1" black McCue impact bumper strip applied to the front of the display	
Other McCue impact bumper strip colors Available upon request	

EXTERIOR FINISHES	
Category "A" laminate finish: <b>A-</b> ____	
Category "B" laminate finish: <b>B-</b> ____	
Other custom laminate specs:	
Powdercoated Textured Black	
Powdercoated Textured White	
Brushed Stainless Steel	
Oak Veneer Plywood	
- Vertical grain direction	
- Horizontal grain direction	
Birch/Maple Veneer Plywood	
- Vertical grain direction	
- Horizontal grain direction	
Clear Finish applied to Veneer	
Stain Finish Choice _____	
1" black McCue impact bumper strip applied to the front of the display	
Other McCue impact bumper strip colors Available upon request	
Miscellaneous Options	
Remote Refrigeration	

## ADDITIONAL FEATURES:

- Designed to maintain product temperature of 55°F with a maximum ambient atmosphere of 75°F/55% humidity
- Hot gas condensate evaporation system
- 2 Year Parts & Labour Warranty
- Front air intake, rear discharge. Avoid any obstructions in these areas

# WHF SERIES



## Applications

- The WHF Series of island shelving are designed to be bolted together to ensure that the units lineup.
- End caps have slat wall for extra merchandising area.
- Top of the center units are designed to help showcase bottles by angling the bottles at approximately 37°.
- Around the exterior of the base is 1" McCue bumper.
- Levelers and ABS shelf liner.

# WHF SERIES FIXED SHELVING ISLAND - END CAP



MODEL	DESCRIPTION	LENGTH	DEPTH	HEIGHT
SDIE-001-01B	Fixed Shelving Island - End Cap	46"	20"	61 ¾"

### FEATURES:

- Birch/maple plywood, slat wall with inserts and solid maple construct
- Levelers
- ABS shelf liner
- 1" McCue bumper

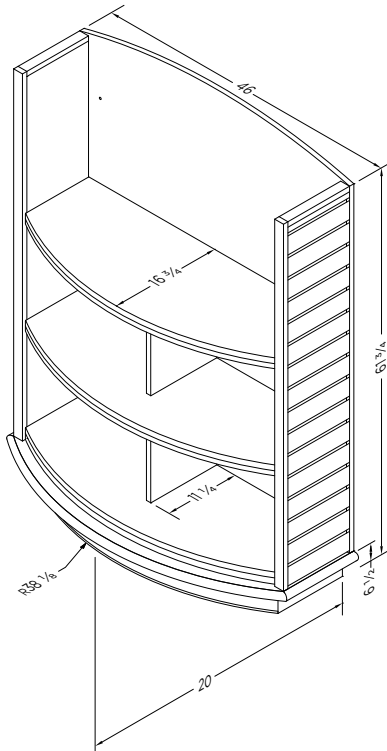
### OPTIONS:

- Stain Finishes - see page 31

**DO NOT EXCEED MAXIMUM WEIGHT PER SHELF**

Note: Information and specifications may change due to engineering improvements.

Specs Based on Standard Wine Bottle	
Max. Weight Per Shelf	Estimated Capacity Per Unit
180lbs	150



SDIE-001-01B



# WHF SERIES FIXED SHELVING ISLAND - CENTRE



MODEL	DESCRIPTION	LENGTH	DEPTH	HEIGHT
SDBD-002-01B	Fixed Shelving Island - 48"	48"	47 3/4"	60 5/8"
SDBD-002-02B	Fixed Shelving Island - 36"	36"	47 3/4"	60 5/8"

### FEATURES:

- Birch/maple plywood and solid maple construct
- ABS shelf liner
- Removable kick
- Levelers

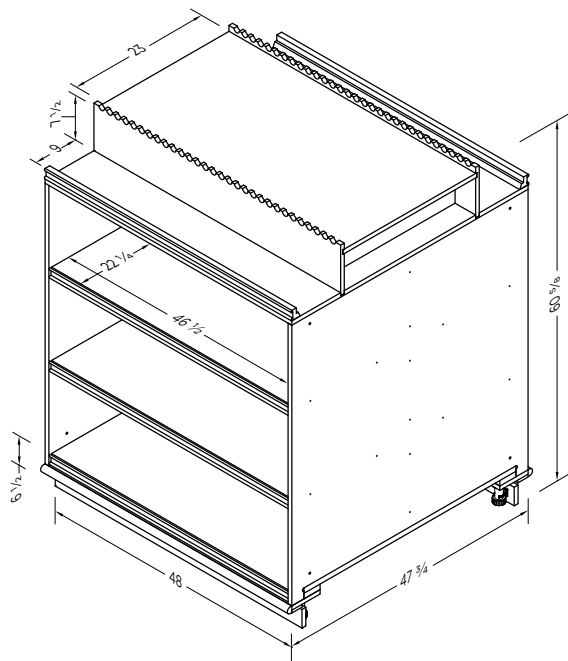
### OPTIONS:

- Stain Finishes - see page 31

**DO NOT EXCEED MAXIMUM WEIGHT PER SHELF**

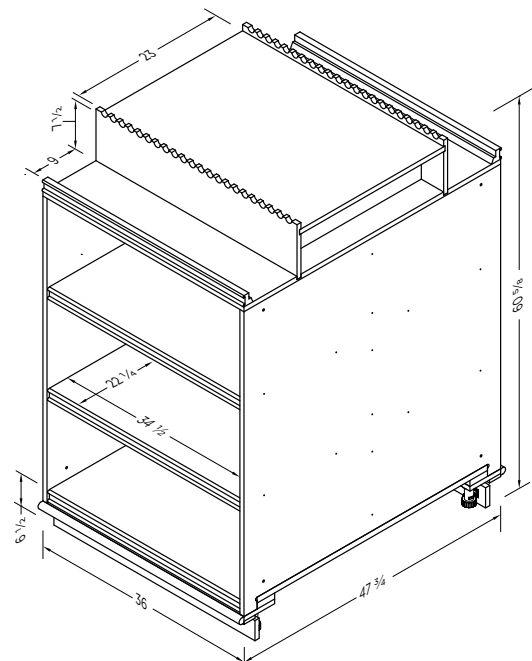
Note: Information and specifications may change due to engineering improvements.

Specs Based on Standard Wine Bottle	
Max. Weight Per Shelf	Estimated Capacity Per Unit
250lbs	560



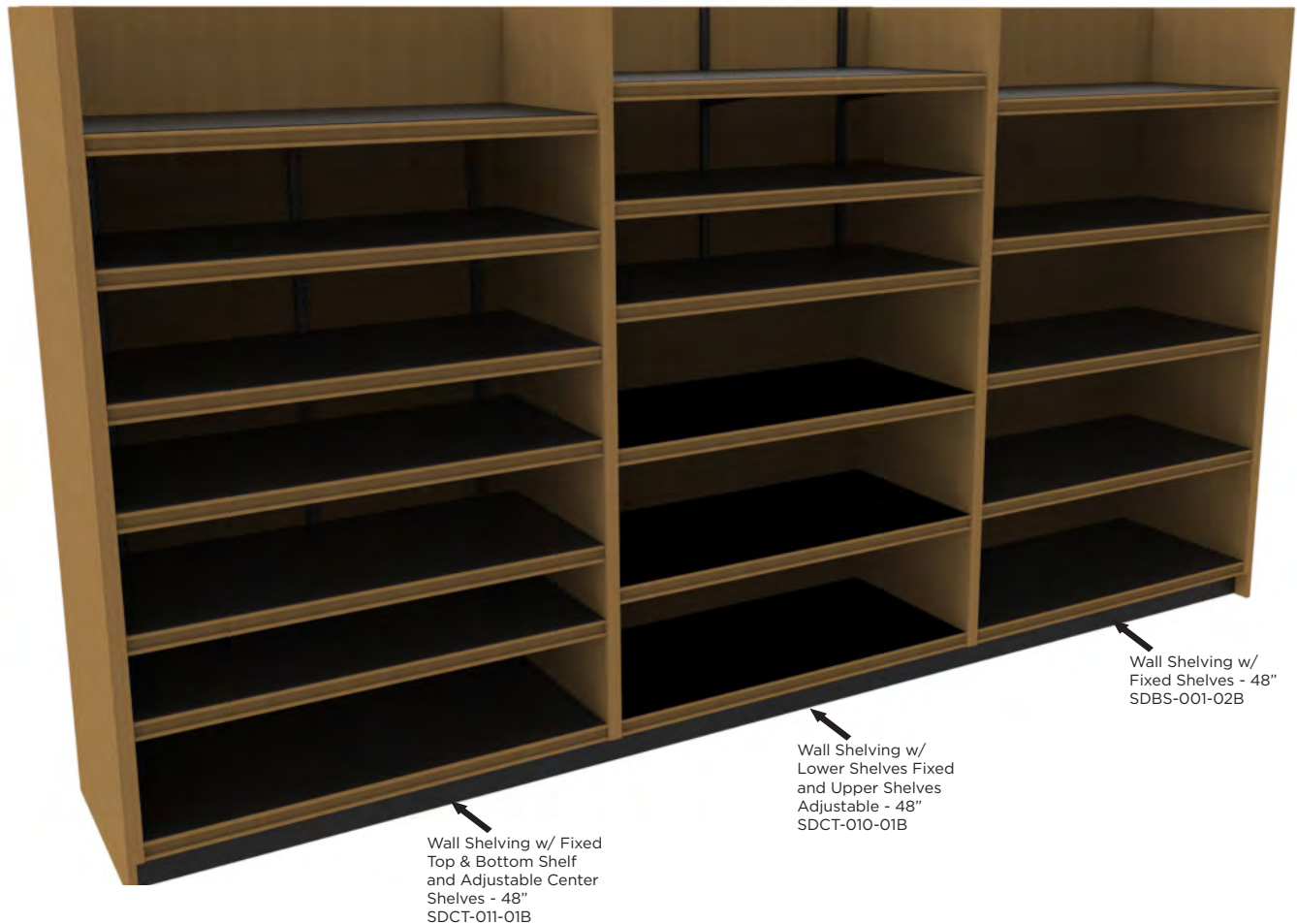
SDBD-002-01B

Specs Based on Standard Wine Bottle	
Max. Weight Per Shelf	Estimated Capacity Per Unit
250lbs	440



SDBD-002-02B

# WHS SERIES



## Applications

- The WHS Series shelving is designed to allow the flexibility and adjustability required to house the different sizes, shapes and packaging of liquor, wine and beer.
- Each unit is equipped with levelers, ticket mold, removable kick and ABS shelf liners.
- At each end of shelving run is a finished end panel.

# WHS SERIES WALL SHELVING



MODEL	DESCRIPTION	LENGTH	DEPTH	HEIGHT
SDBS-001-01B	Wall Shelving w/ Fixed Shelves - 36"	36"	23"	78"
SDBS-001-02B	Wall Shelving w/ Fixed Shelves - 48"	48"	23"	78"
SDBS-002-01B	Wall Shelving w/ Fixed Shelves - 48"	48"	23"	78"
SDCT-010-01B	Wall Shelving w/ Adj Upper Shelves - 48"	48"	23"	78"
SDCT-011-01B	Wall Shelving w/ Adj Middle Shelves - 48"	48"	23"	78"

### FEATURES:

- Birch/maple plywood and solid maple construct
- Levelers
- ABS shelf liner

### OPTIONS:

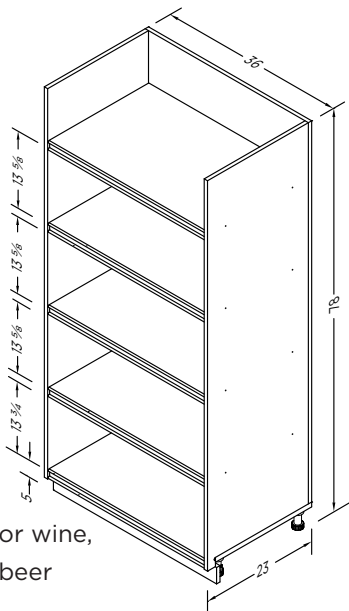
- Stain Finishes - see page 31

**DO NOT EXCEED MAXIMUM WEIGHT PER SHELF**

Note: Information and specifications may change due to engineering improvements.

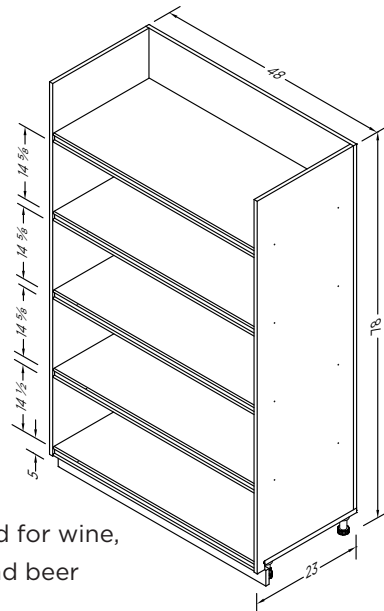
Specs Based on Standard Wine Bottle	
Max. Weight Per Shelf	Estimated Capacity Per Unit
250lbs	290

Specs Based on Standard Wine Bottle	
Max. Weight Per Shelf	Estimated Capacity Per Unit
250lbs	380



Designed for wine,  
liquor and beer

SDBS-001-01B



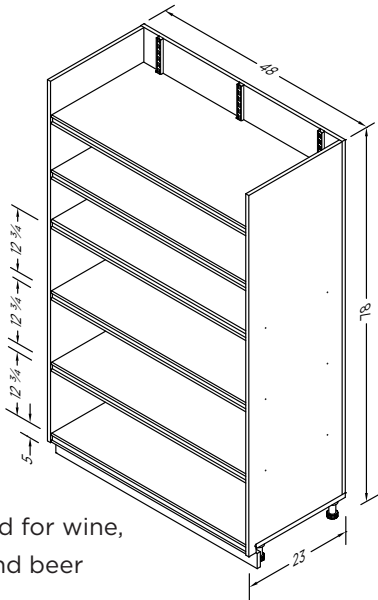
Designed for wine,  
liquor and beer

SDBS-001-02B

# WHS SERIES

## WALL SHELVING CONTINUED

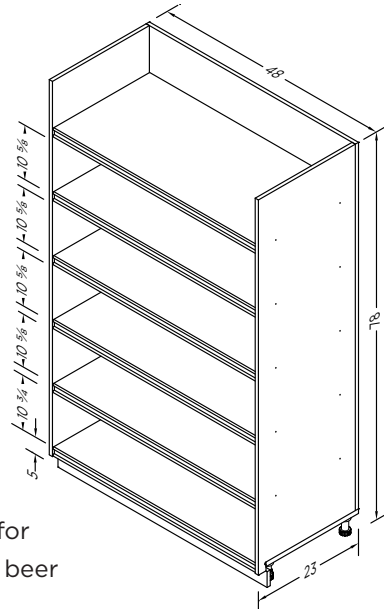
Specs Based on Standard Wine Bottle	
Max. Weight Per Shelf	Estimated Capacity Per Unit
250lbs	380



Designed for wine,  
liquor and beer

SDCT-010-01B

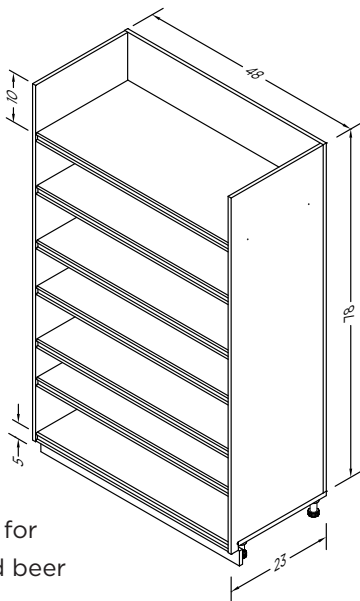
Specs Based on 6 Pack Craft Beer (335ml)	
Max. Weight Per Shelf	Estimated Capacity Per Unit
250lbs	140



Designed for  
liquor and beer

SDBS-002-01B

Specs Based on 6 Pack Craft Beer (335ml)	
Max. Weight Per Shelf	Estimated Capacity Per Unit
250lbs	160



Designed for  
liquor and beer

SDCT-011-01B

# WHC SERIES



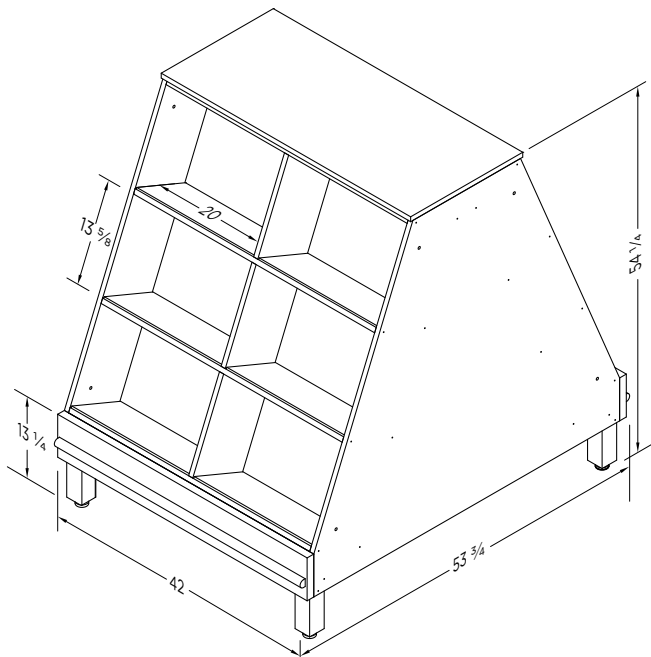
## Applications

- The WHC Series shelving is a unique crate style island display that allows end cross merchandising.
- Each island run has the option of being accessorized with a slat wall panel and either shelves, riser or both.
- Centre units are equipped with 1" McCue Bumper, ABS bumper, levelers and protective leg caps.

# WHC SERIES CRATE STYLE ISLAND DISPLAY



Specs Based on Standard Wine Bottle	
Max. Weight Per Shelf	Estimated Capacity Per Unit
80lbs	170



SDBD-001-01B

MODEL	DESCRIPTION	LENGTH	DEPTH	HEIGHT
SDBD-001-01B	Crate Style Island Display - Centre	42"	53 3/4"	54 1/4"
SDBD-001-01C	Crate Style Island Display - Slat Wall Panel	43 1/2"	53 3/4"	54 1/4"
SDBD-001-01D	Crate Style Island Display - Slat Wall Panel & Shelves	53 7/8"	53 3/4"	54 1/4"
SDBD-001-01E	Crate Style Island Display - Slat Wall Panel, Riser & Shelves	56 1/2"	53 3/4"	54 1/4"

### FEATURES:

- Birch/maple plywood and solid maple construct
- Levelers
- McCue Bumper
- ABS shelf liner
- Protective Leg Caps

### OPTIONS:

- Stain Finishes - see page 31

**DO NOT EXCEED MAXIMUM WEIGHT PER SHELF**

Note: Information and specifications may change due to engineering improvements.

# WHC SERIES CRATE STYLE ISLAND DISPLAY

DO NOT EXCEED MAXIMUM WEIGHT PER SHELF

Specs Based on Standard Wine Bottle	
Max. Weight Per Shelf	Estimated Capacity Per Unit
80lbs	170



CENTRE  
SDBD-001-01B

Specs Based on Standard Wine Bottle	
Max. Weight Per Shelf	Estimated Capacity Per Unit
80lbs	170



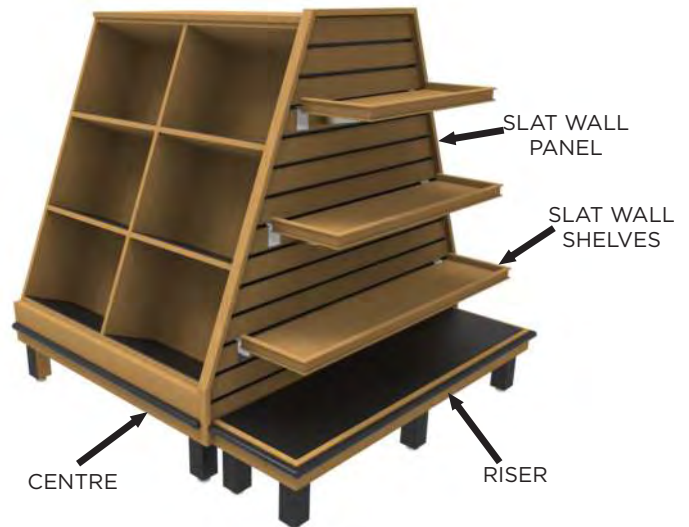
CENTER w/ SLAT WALL PANEL  
SDBD-001-01C

Specs Based on Standard Wine Bottle	
Max. Weight Per Shelf	Estimated Capacity Per Unit
80lbs	210



CENTRE w/ SLAT WALL PANEL &  
SHELVES  
SDBD-001-01D

Specs Based on Standard Wine Bottle	
Max. Weight Per Shelf	Estimated Capacity Per Unit
80lbs	240



CENTRE w/ SLAT WALL PANEL,  
RISER & SHELVES  
SDBD-001-01E

# WFL SERIES



## Applications

- The WFL Series shelving island is designed to hold a maximum weight capacity (evenly distributed) of 220lbs per shelf.
- Shelves are constructed out of metal and come equipped with ticket molding.
- End caps have slat wall for extra merchandising area.
- Around the exterior of the base is 1" McCue bumper.
- Protective corner caps.



# WFL SERIES SHELVING ISLAND - END CAP



MODEL	DESCRIPTION	LENGTH	DEPTH	HEIGHT
SDIE-002-01B	Shelving Island - End Cap	46"	19 1/4"	66 3/4"

### FEATURES:

- Birch/maple plywood and solid maple construct
- Metal shelves with maple ticket mold
- Slat wall gables with metal inserts
- 1" McCue bumper
- Protective corner caps

### OPTIONS:

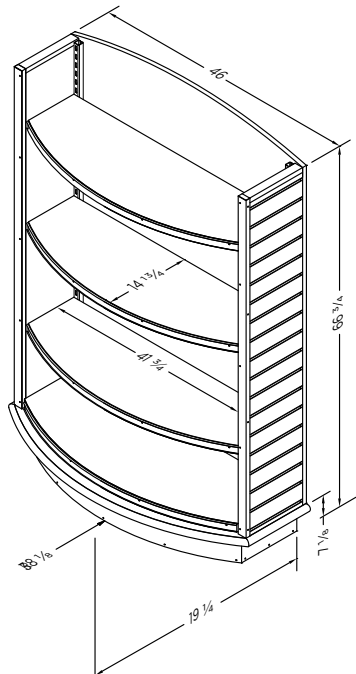
- Stain Finishes - see page 31

**DO NOT EXCEED MAXIMUM WEIGHT PER SHELF**

Note: Information and specifications may change due to engineering improvements.

### Specs Based on Standard Wine Bottle

Max. Weight Per Shelf	Estimated Capacity Per Unit
220lbs	170



SDIE-002-01B

# WFL SERIES SHELVING ISLAND - CENTRE



MODEL	DESCRIPTION	LENGTH	DEPTH	HEIGHT
SDCD-005-01B	Shelving Island - Centre	48"	47 ¾"	59 ½"

#### FEATURES:

- Birch/maple plywood and solid maple construct
- Metal shelves with maple ticket mold
- 1" McCue bumper
- Protective corner caps

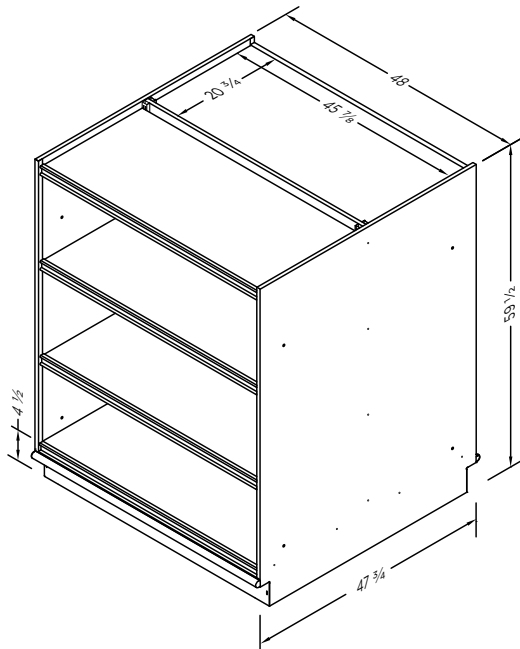
#### OPTIONS:

- Stain Finishes - see page 31

**DO NOT EXCEED MAXIMUM WEIGHT PER SHELF**

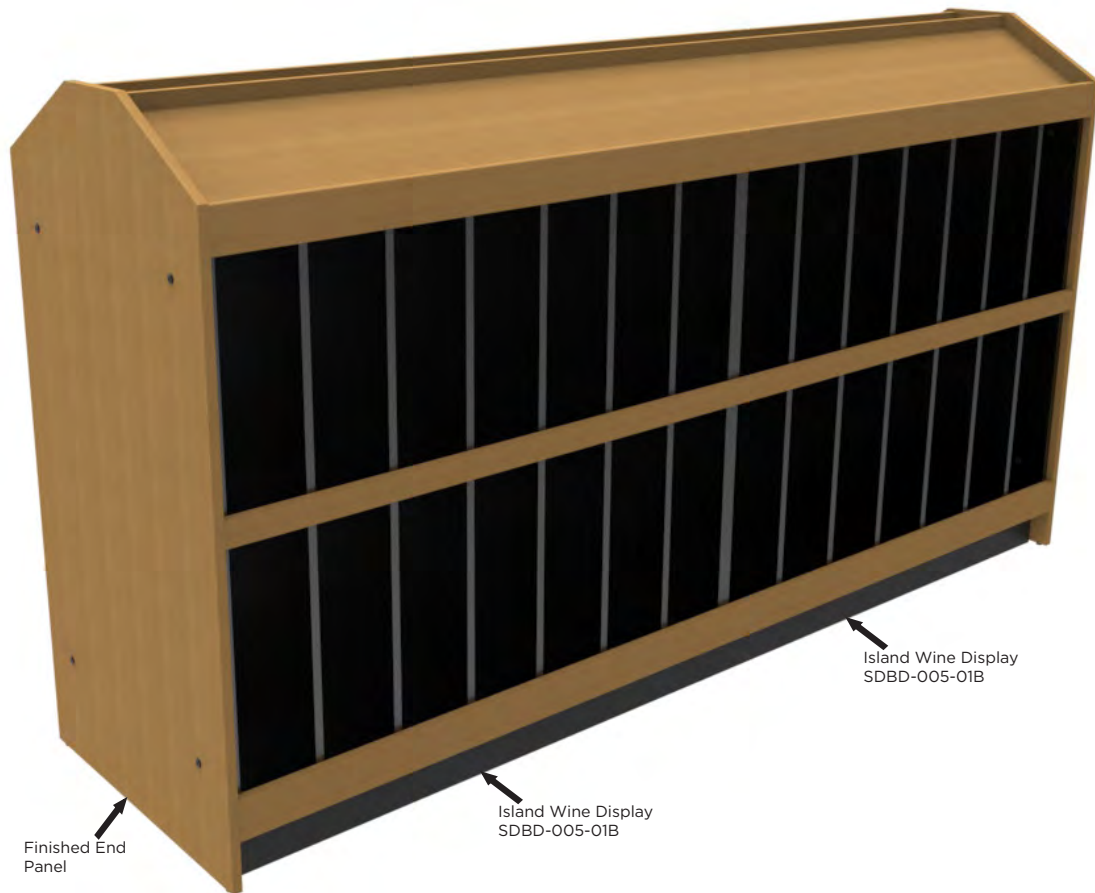
Note: Information and specifications may change due to engineering improvements.

Specs Based on Standard Wine Bottle	
Max. Weight Per Shelf	Estimated Capacity Per Unit
370lbs	610



SDCD-005-01B

# WSB SERIES



## Applications

- The WSB series is a small footprint wine display with the ability to bolt together
- Top deck sits on a 30° angle to allow bottles to be showcased
- Levelers and removable kick

# WSB SERIES WINE DISPLAY



MODEL	DESCRIPTION	LENGTH	DEPTH	HEIGHT
SDBD-005-01B	Wine Display	47 1/2"	27 1/4"	53"
SDBD-005-01C	Wine Display with 1 Finished End Panel	48 1/4"	27 1/4"	53"

### FEATURES:

- Birch/maple plywood, melamine and solid maple construct
- Top deck sits on 30° angle to allow bottles to be showcased
- Levelers
- Removable kick
- SDBS-005-01C consists of wine display (SDBD-5-01B) and one finished end panel

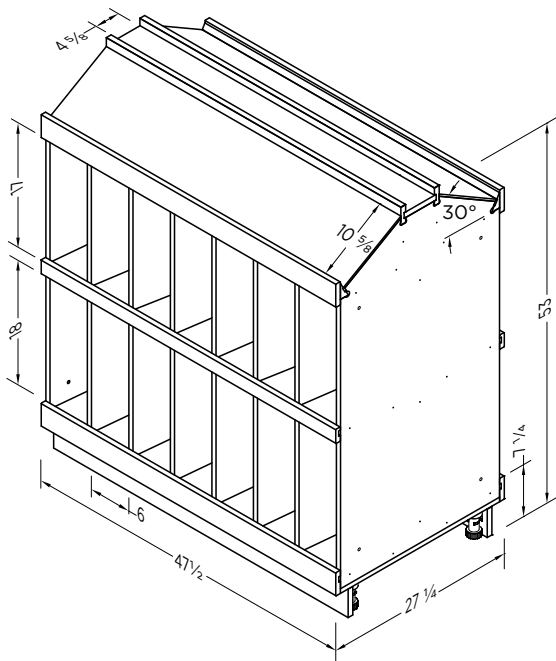
### OPTIONS:

- Stain Finishes - see page 31

**DO NOT EXCEED MAXIMUM WEIGHT PER SHELF**

Note: Information and specifications may change due to engineering improvements.

Specs Based on Standard Wine Bottle	
Max. Weight Per Shelf	Estimated Capacity Per Unit
40lbs	200



SDBD-005-01B



# WSB SERIES CURVED SHELVING



MODEL	DESCRIPTION	LENGTH	DEPTH	HEIGHT
SDBD-003-01B	Curved Shelving	72 1/8"	20 1/2"	53 1/4"

### FEATURES:

- Birch/maple plywood and melamine construct
- Tack glides

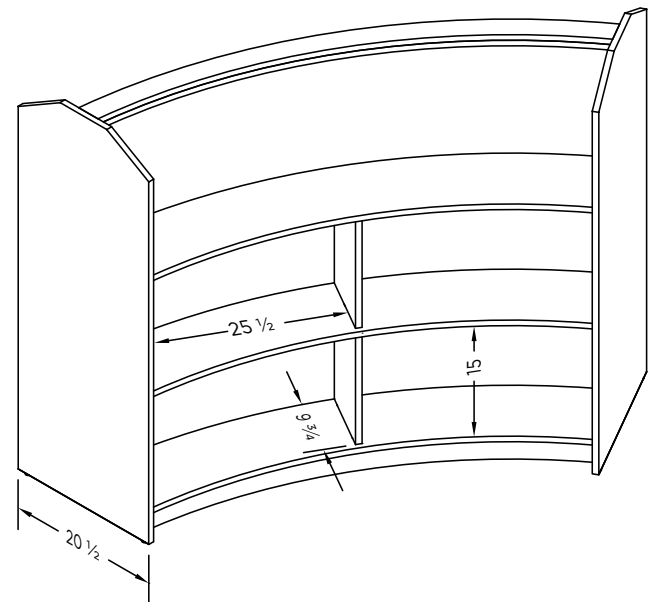
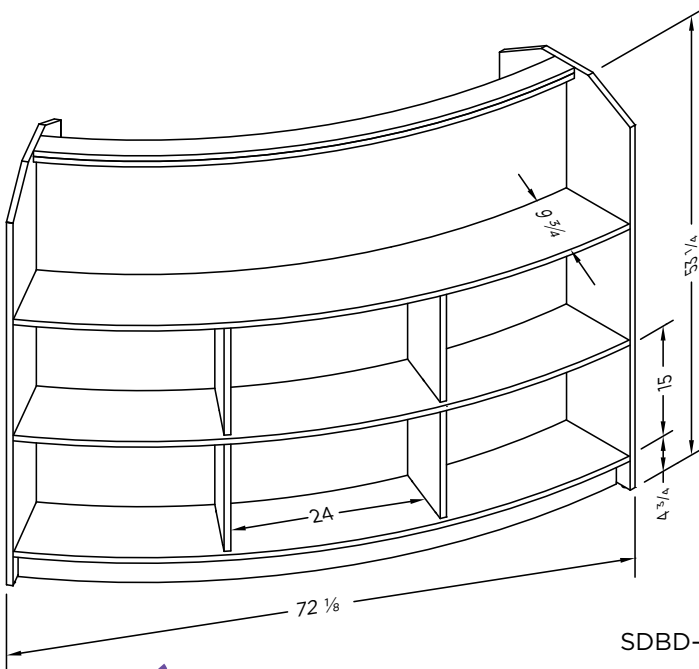
### OPTIONS:

- Stain Finishes - see page 31

**DO NOT EXCEED MAXIMUM WEIGHT PER SHELF**

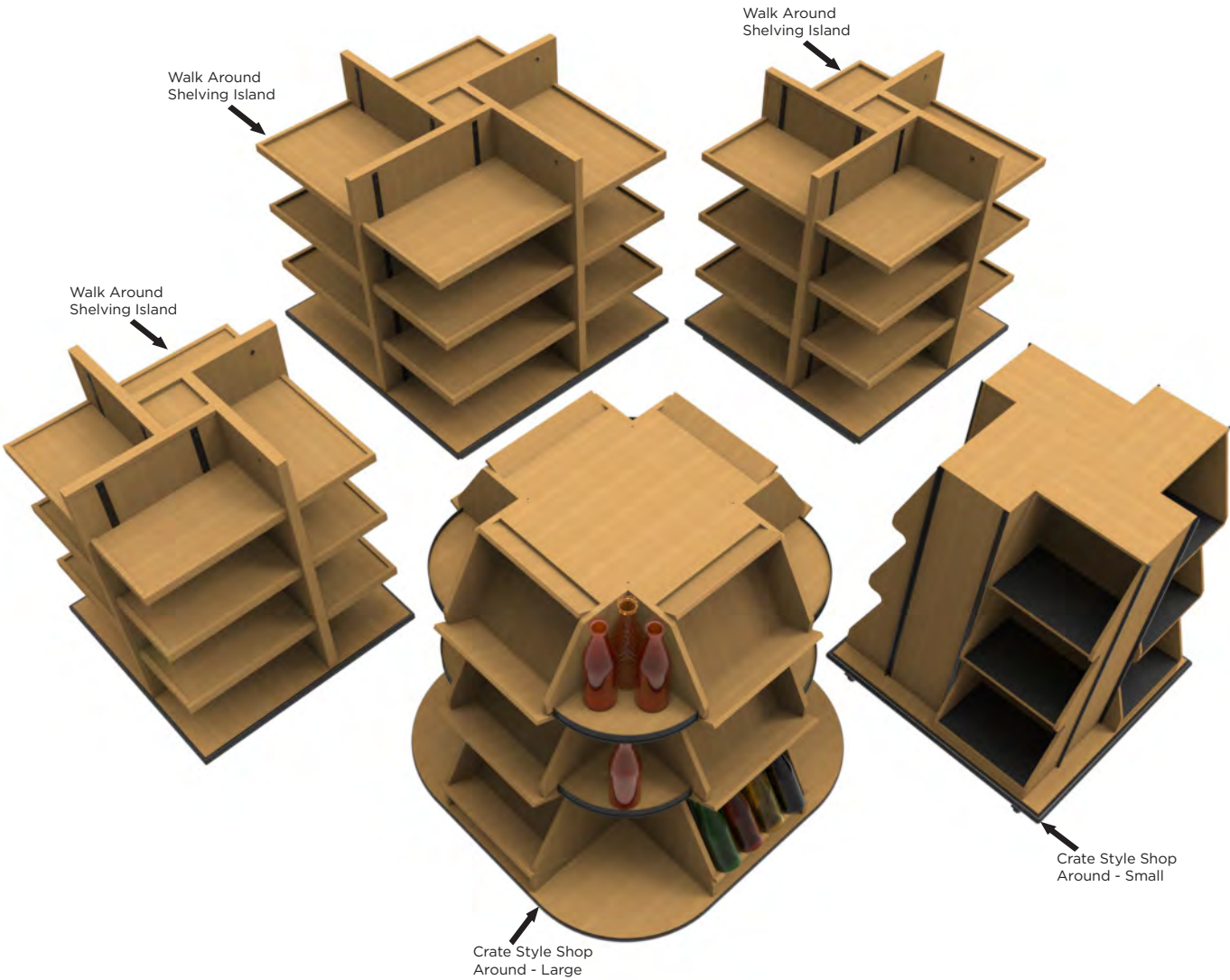
Note: Information and specifications may change due to engineering improvements.

Specs Based on Standard Wine Bottle	
Max. Weight Per Shelf	Estimated Capacity Per Unit
120lbs	200



SDBD-003-01B

# FIXTURES



# CRATE STYLE SHOP AROUND DISPLAY



MODEL	DESCRIPTION	LENGTH	DEPTH	HEIGHT
SDSA-005-01B	Crate Style Shop Around - Large	52"	52"	54 7/8"
SDSA-006-01B	Crate Style Shop Around - Small	38"	38"	50 1/8"

## FEATURES:

- Birch/maple plywood and solid maple construct
- Heavy duty locking casters
- Bumper around base
- SDSA-005-01B
  - Ticket mold on curved shelves
- SDSA-006-01B
  - Sign track on all 4 sides for posters
  - ABS shelf liner

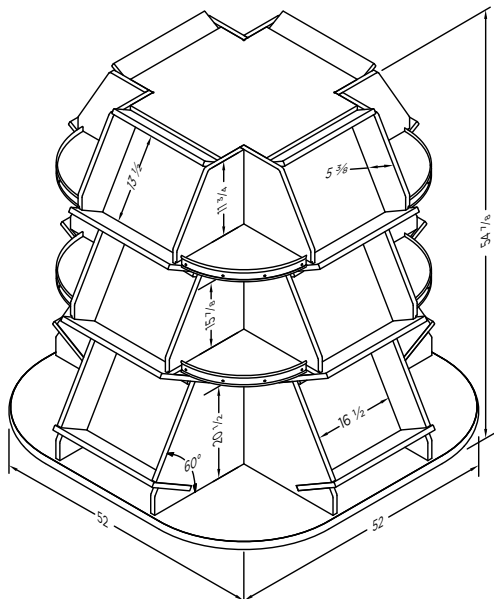
## OPTIONS:

- Stain Finishes - see page 31

**DO NOT EXCEED MAXIMUM WEIGHT PER SHELF**

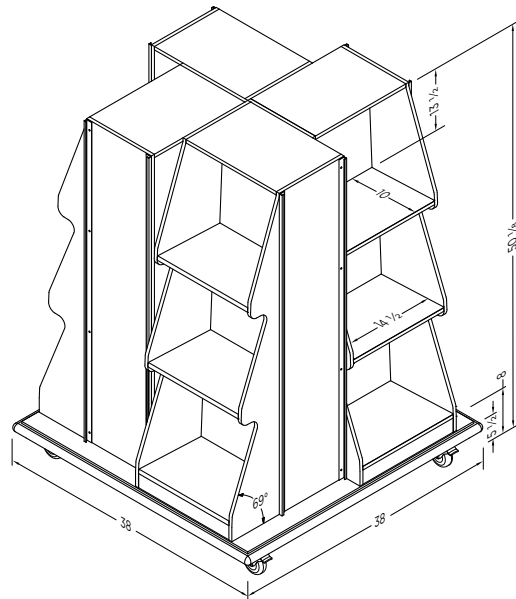
Note: Information and specifications may change due to engineering improvements.

Specs Based on Standard Wine Bottle	
Max. Weight Per Shelf	Estimated Capacity Per Unit
140lbs	180



SDSA-005-01B

Specs Based on Standard Wine Bottle	
Max. Weight Per Shelf	Estimated Capacity Per Unit
140lbs	140



SDSA-006-01B

# WALKAROUND SHELVING ISLAND



MODEL	DESCRIPTION	LENGTH	DEPTH	HEIGHT
SDSA-011-01B	Walkaround Shelving Island - 48"	48"	48"	48 3/4"
SDSA-012-01B	Walkaround Shelving Island - 41"	41"	41"	48 3/4"
SDSA-013-01B	Walkaround Shelving Island - 37"	37"	37"	48 3/4"

## FEATURES:

- Birch/maple plywood and solid maple construct
- Adjustable shelves
- Heavy duty non-locking casters
- ABS bumper

## OPTIONS:

- Stain Finishes - see page 31

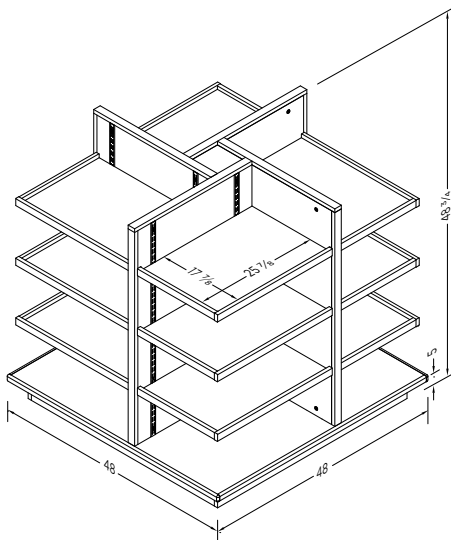
**DO NOT EXCEED MAXIMUM WEIGHT PER SHELF**

Note: Information and specifications may change due to engineering improvements.

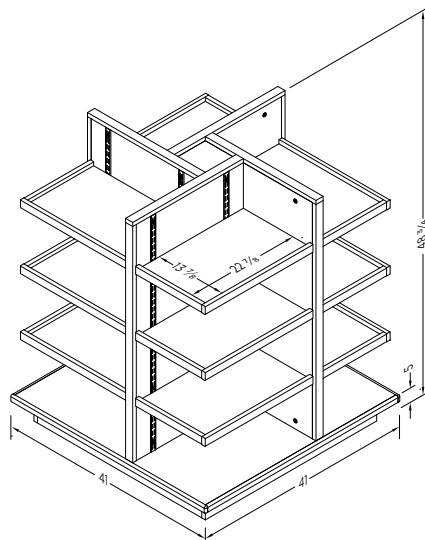
Specs Based on Standard Wine Bottle	
Max. Weight Per Shelf	Estimated Capacity Per Unit
180lbs	530

Specs Based on Standard Wine Bottle	
Max. Weight Per Shelf	Estimated Capacity Per Unit
180lbs	330

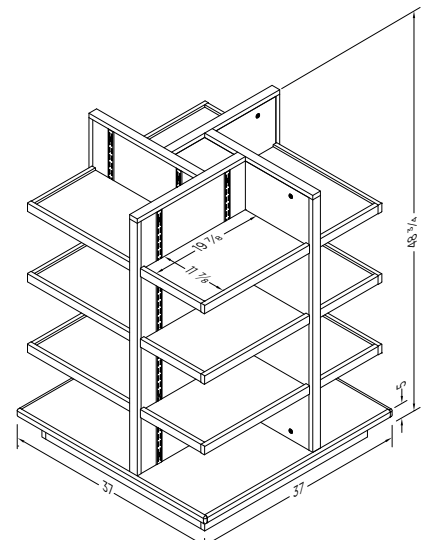
Specs Based on Standard Wine Bottle	
Max. Weight Per Shelf	Estimated Capacity Per Unit
180lbs	230



SDSA-011-01B



SDSA-012-01B



SDSA-013-01B